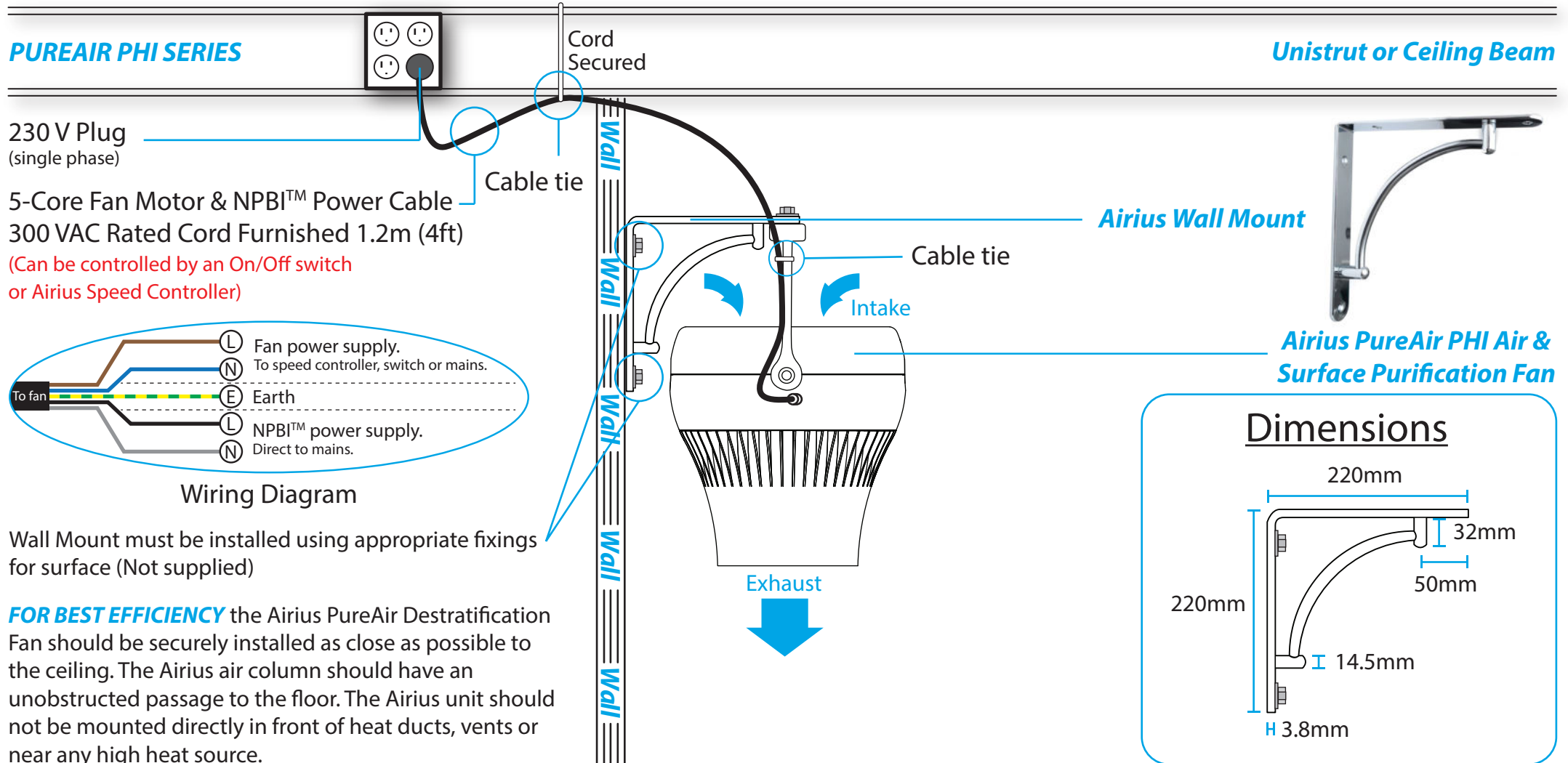


## AIRIUS MOUNTING GUIDELINES - Wall Mount - Models 10, 15 & 25 (Long & Short Nozzle)

**SOLD SEPERATELY**

### PUREAIR PHI SERIES

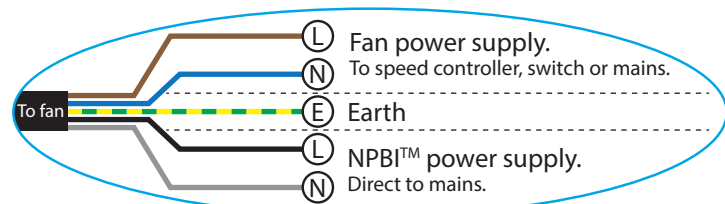
**Unistrut or Ceiling Beam**



230 V Plug  
(single phase)

5-Core Fan Motor & NPBI™ Power Cable  
300 VAC Rated Cord Furnished 1.2m (4ft)

(Can be controlled by an On/Off switch  
or Airius Speed Controller)



Wiring Diagram

Wall Mount must be installed using appropriate fixings for surface (Not supplied)

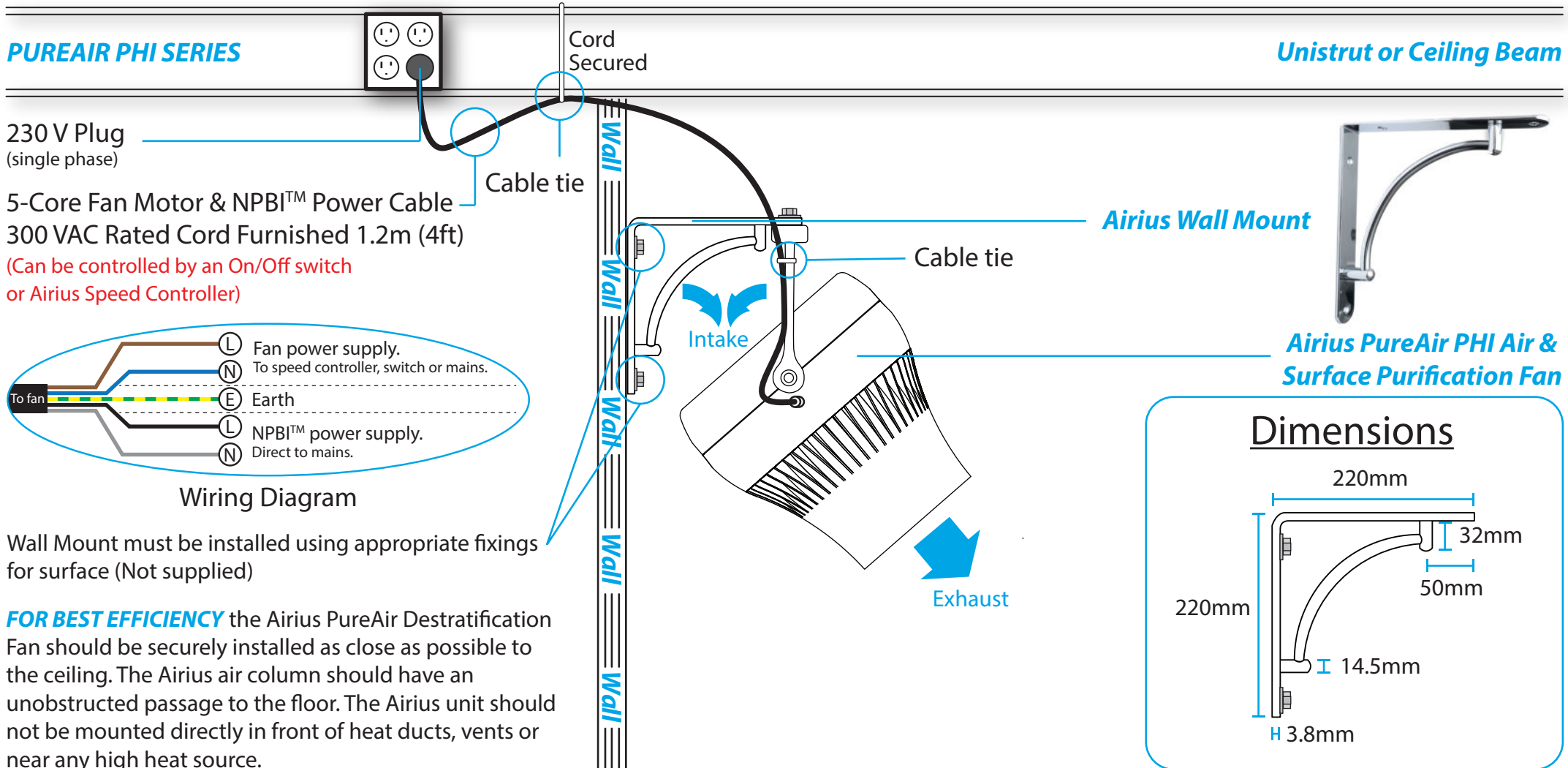
**FOR BEST EFFICIENCY** the Airius PureAir Destratification Fan should be securely installed as close as possible to the ceiling. The Airius air column should have an unobstructed passage to the floor. The Airius unit should not be mounted directly in front of heat ducts, vents or near any high heat source.

## AIRIUS MOUNTING GUIDELINES - Wall Mount - Models 10, 15 & 25 - Angled (Long & Short Nozzle)

**SOLD SEPERATELY**

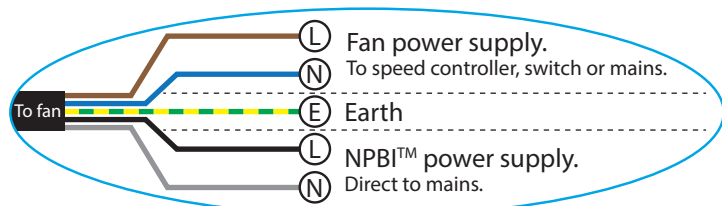
### PUREAIR PHI SERIES

**Unistrut or Ceiling Beam**



230 V Plug  
(single phase)

5-Core Fan Motor & NPBI™ Power Cable  
300 VAC Rated Cord Furnished 1.2m (4ft)  
(Can be controlled by an On/Off switch  
or Airius Speed Controller)



Wiring Diagram

Wall Mount must be installed using appropriate fixings for surface (Not supplied)

**FOR BEST EFFICIENCY** the Airius PureAir Destratification Fan should be securely installed as close as possible to the ceiling. The Airius air column should have an unobstructed passage to the floor. The Airius unit should not be mounted directly in front of heat ducts, vents or near any high heat source.

**Airius Wall Mount**

**Airius PureAir PHI Air & Surface Purification Fan**

### Dimensions

